

Valves

Radius Valves

Combining high quality engineering with a sleek and elegant style, these beautifully smooth valves provide the perfect finishing touch to any radiator. Available in an array of stunning finishes, with a choice of angled, corner or straight versions, Radius valves offer superior heating control while complementing and enhancing a radiator's design.

Radius manual
Chrome straight



Radius manual
Satin straight



Radius angled manual - chrome

Radius angled manual - satin

Radius angled manual - black



Radius angled
TRV - chrome. Also
available as a straight
or corner valve.



Radius angled
TRV - satin. Also
available as a straight
or corner valve.



Radius angled TRV -
white. Also available
as a corner valve.



Radius angled TRV -
black. Also available
as a straight or
corner valve.



Radius angled TRV -
antique brass. Also
available as a
corner valve.



Radius angled TRV -
antique copper. Also
available as a
corner valve.

Radius Corner Valves



Radius corner manual
15mm - Chrome

Stratford
Corner, Double
Angle Valves

This dynamic corner/double angle valve set is the perfect solution to tidy pipe work for your towel rails. Optional TRV heads available.



Manual
version



Stratford Corner,
Double Angle TRV
(white head)



Optional chrome
TRV head



Radius corner
TRV 15mm - chrome.



Radius corner
TRV 15mm - satin.



Radius corner
TRV 15mm - white.



Radius corner
TRV 15mm -
black.



Radius corner
TRV 15mm -
antique brass.



Radius corner
TRV 15mm -
antique copper.

Valves

Chartwell manual

Chartwell
brass angled
15mm



Chartwell
anthracite
angled 15mm



Chartwell TRV

Chartwell
brass
TRV 15mm



Chartwell
anthracite
TRV 15mm



Finchley Angled TRV



Black
15mm



Chrome
15mm



Satin
15mm



White
15mm



Antique
Copper
15mm



Antique
Brass
15mm

Temple manual



Temple brass
angled 15mm

Temple TRV



Temple brass
angled TRV 15mm

Gyro manual

Gyro chrome angled
manual 15mm



Gyro TRV

Gyro angled TRV
15mm white head



Gyro chrome
angled TRV 15mm
chrome head

Kentwell angled manual



Kentwell polished brass angled manual 15mm

Kentwell chrome angled manual 15mm

Kentwell angled TRV



Kentwell polished brass angled TRV 15mm

Kentwell chrome angled TRV 15mm

Kentwell corner manual



Kentwell polished brass corner manual 15mm (left or right handed)

Kentwell chrome corner manual 15mm (left or right handed)

Kentwell corner TRV



Kentwell polished brass corner TRV 15mm (left or right handed)

Kentwell chrome corner TRV 15mm (left or right handed)

Nostalgia manual

Nostalgia brass angled manual 15mm

Nostalgia anthracite angled manual 15mm



Nostalgia TRV

Nostalgia brass angled TRV 15mm

Nostalgia anthracite angled TRV 15mm



Valves

Sterling TRV

The Sterling contract TRV is a simple, value engineered valve suitable for most general applications. Available in angle or straight versions.



Studio

Available in manual and TRV options, this elegant valve set is perfect for most radiators and towel rails.



Studio angled TRV



Angled manual valves

Also available in straight versions

Belgravia



Belgravia chrome angled manual 15mm

Tekne



Angled valves

Twin Valve manual



Twin Valve chrome angled manual 15mm



Twin Valve chrome straight manual 15mm

Twin Valve TRV



Twin Valve chrome angled TRV MHS Head



Twin Valve chrome angled TRV



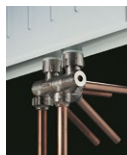
Twin Valve chrome straight TRV MHS Head



Twin Valve chrome straight TRV

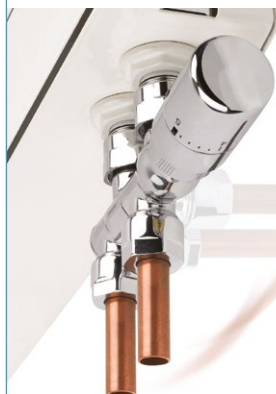
Variocon Valve

The versatile Variocon valve set is a straight /angled valve all-in-one, allowing connections through the wall or up from the floor.



Variocon Chrome TRV valve and optional chrome heads

The Variocon Chrome TRV valve can swivel for angled, through the wall connections or simply come up from the floor for straight connections to 15mm copper pipe. Connection centres - 50mm Inlet and Outlet. Note: The Flow must be on the same side as the TRV Head



Variocon Chrome TRV valve body with MHS chrome head
Code: VLVAR-KIT K

Variocon Chrome TRV valve body with Standard chrome head
Code: VLVAR-KIT J



Angled:

Use these for radiators where the pipework is 'from the floor' and the connection on the radiator is horizontal. These can also be used on towel rails when the pipework is through the wall.

or

Straight:

Use the straight type when the pipework is 'from the floor' and the connection on the radiator is vertical.

or

Corner:

Use these for radiators or towel rails where the pipework is 'from the wall'.

Manual:

Use for any application.

or

TRV:

User adjustable to automatically control the final temperature of the room.

Ambiguard Internal Valve

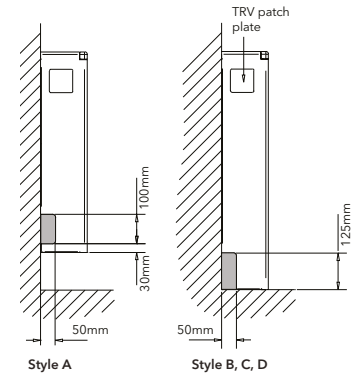
(Code: AG-VLVTRV-INTERN)

The Ambiguard Internal Valve kit is an internal control and consists of a ½" angle TRV and LSV pattern valve body, remote sensing phial and TRV head.



Pipe cut-outs

(optional)



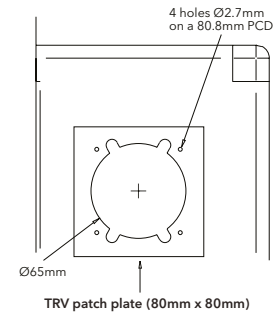
Ambiguard External Valve

(Code: AG-VLVTRV-EXTERN)

The Ambiguard External Valve kit is an external control and consists of a ½" angle TRV and LSV pattern valve body, remote transmitter sensor and TRV head.



TRV preparation



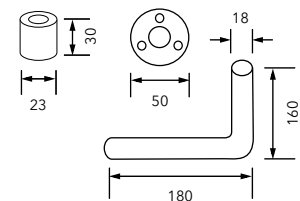
Note: All Ambiguard valves are for use on two pipe systems. The TRVs provided are not bi-directional and must always be connected to the flow pipework. All kits are provided with 15mm copper adaptors to provide the connection to both the inlet and outlet of the valve to either ½" BSP or 15mm connection.

Sleeving kits

(for 15mm copper tube)

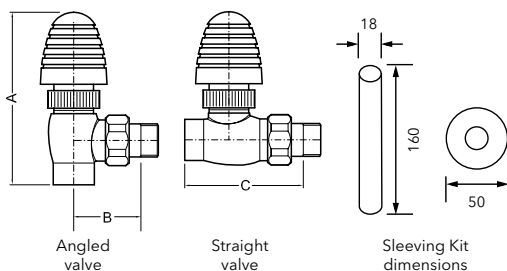


Sleeving kit for standard type elements



Typical valve dimensions

The following notation has been used for dimensions:



Important Note: All dimensions are given in good faith however it is always advisable to await delivery of your radiator and valves before setting the pipe work in its final positions. MHS cannot accept any liability for pre delivery installed pipe work not matching up with the final item.

Valves	A	B	C
Belgravia angled	106	42	-
Chartwell angled manual	107	44	-
Chartwell angled TRV	139	44	-
Chartwell ½" BSP angled	93	53	-
Chartwell ¾" BSP angled	95	53	-
Finchley TRV	130	42	-
Gyro angled manual	86	43	-
Gyro angled TRV	135	43	-
Gyro straight manual/TRV	-	-	72
Kentwell angled/corner manual	100	46	-
Kentwell angled/corner TRV	110	46	-
Nostalgia angled manual	107	53	-
Nostalgia angled TRV	139	53	-

Valves	A	B	C
Nostalgia ½" BSP angled	93	53	-
Nostalgia ¾" BSP angled	95	53	-
Radius angled manual	77	41	-
Radius straight manual/TRV	-	-	67
Radius TRV angled	126	41	-
Radius corner manual	54	41	-
Radius corner TRV	110	41	-
Sterling Straight	-	-	77
Sterling Angle TRV	120	48	-
Stratford Corner Manual	-	44	-
Stratford Corner TRV	-	45	-
Studio Angled Manual	80	37	-
Studio Straight Manual	-	-	77
Tekne angled	107	44	-
Temple Manual	100	44	-
Temple TRV	130	44	-

All MHS valves are suitable for connection to 15mm copper pipe only (except ½" & ¾" bsp-f Chartwell and Nostalgia valves)